



TAN THANH CONTAINER
ALWAYS LEADING HIGH QUALITY

HOTLINE: +84 968 039 939

HO CHI MINH CITY Head Office

📍 Quarter 4, Truong Son St.,
Linh Trung Ward, Thu Duc City, HCM City
☎ (84 28) 3722 2545 - Fax: (84 28) 3722 2535
📞 0968 039 939
✉ info@tanthanhcontainer.com

DA NANG Depot

📍 35 Truong Chi Cuong street, Hoa Cuong Nam
Ward, Hai Chau Dist., Da Nang city
☎ (84 236) 3632 688 - Fax: (84 236) 3632 988
📞 0905 565 855
✉ danang@tanthanhcontainer.com

CAI MEP Depot

📍 Group 8, Tan Loc Hamlet, Phuoc Hoa Commune,
Tan Thanh dist., Ba Ria - Vung Tau Province
☎ (84 254) 3890 379 - Fax: (84 254) 3890 378
📞 0909 021 704
✉ vungtau@tanthanhcontainer.com

HA NOI Depot

📍 Yen Vien Nam station,
Ha Huy Tap street, Yen Vien town,
Gia Lam district, Hanoi city
📞 0936 697 039
✉ hanoi@tanthanhcontainer.com

VINH LONG Depot

📍 2 Quarter Phu Thang, Tan Phu Ward,
Cai Rang dist., Can Tho City
☎ (84 292) 3512 305
📞 0932 616 187
✉ cantho@tanthanhcontainer.com

HAI PHONG Depot

📍 Lot 2,9 CN, MP Dinh Vu Industrial Zone,
Dong Hai 2 Ward, Hai An Dist, Hai Phong City
☎ (84 225) 8832 139
📞 0906 196 039
✉ haiphong@tanthanhcontainer.com



TAN THANH CONTAINER
ALWAYS LEADING HIGH QUALITY

**TAN THANH TRADING
MECHANIC CORPORATION**
Always leading in high quality & innovation



**CATALOGUE
CONTAINER
2023**

☎ +84 968 039 939

🌐 www.tanthanhcontainer.com

✉ info@tanthanhcontainer.com

CONTENT

- 03. FOREWORDS
- 05. CORE ACTIVITIES
- 06. SPECIFICATIONS OF DRY CONTAINER
- 08. CONTAINER SERVICES
- 10. MODIFIED CONTAINER
- 12. 10' OFFICE CONTAINER
- 13. SPECIFICATIONS OF 10' OFFICE CONTAINER
- 14. 20' OFFICE CONTAINER
- 16. SPECIFICATIONS OF 20' OFFICE CONTAINER
- 18. 40' OFFICE CONTAINER
- 20. SPECIFICATIONS OF 40' OFFICE CONTAINER
- 22. SANITARY CONTAINER
- 25. SPECIFICATIONS OF SANITARY CONTAINER
- 26. TYPICAL PROJECTS
- 36. SUPPLIERS & PARTNERS

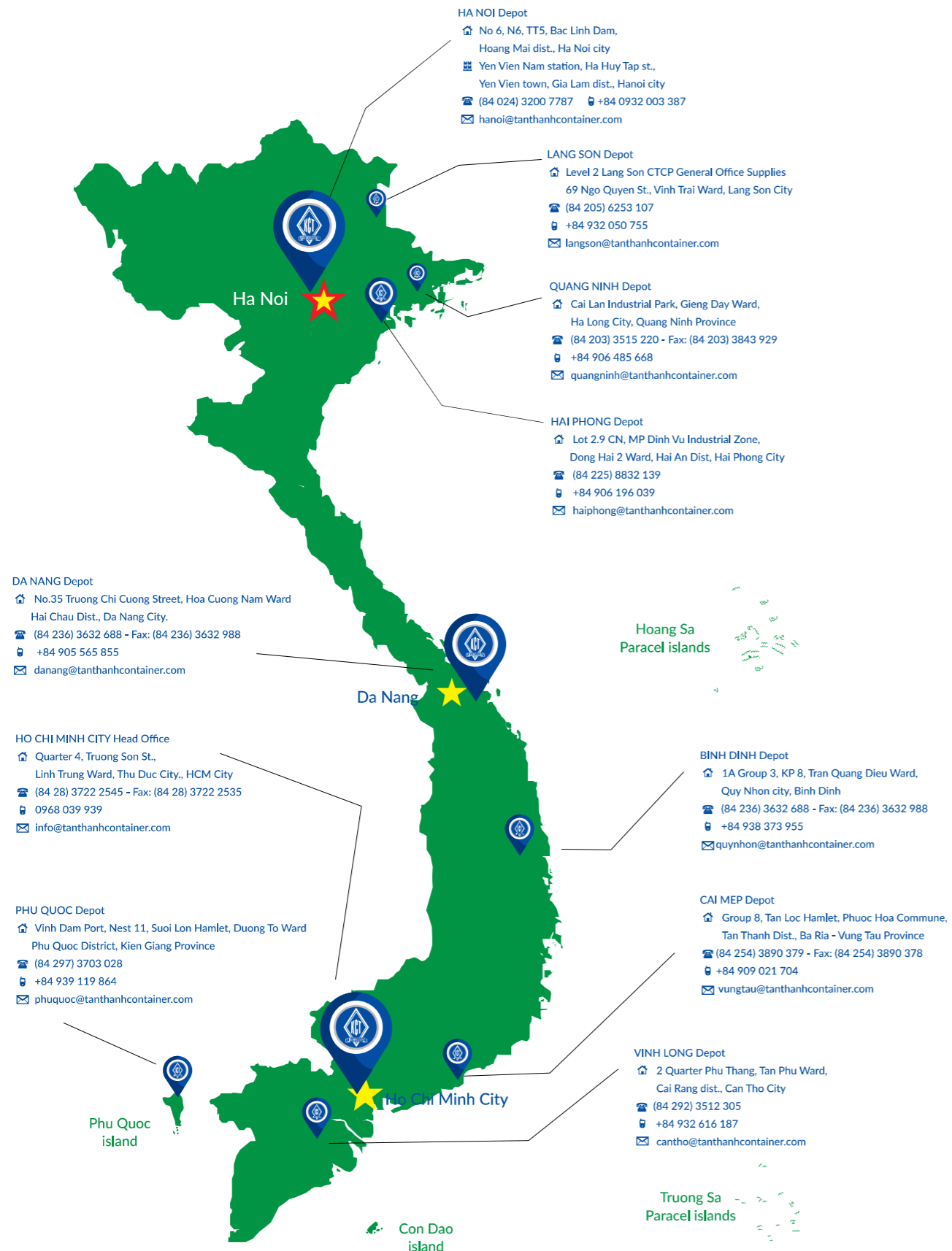


FOREWORDS

We would like to thank all clients and partners who have stood by us during good and bad times. Our company pledges its loyalty in return, sharing customer's difficulties and success, leading to long-term growth.

Tan Thanh Trading Mechanic Corporation has received the encouragement, support and interest from customers and partners for over 25 years. In order to satisfy these great expectations, the entire team at Tan Thanh has been continuously improving technology, machinery and management skill, perfecting product quality, offering competitive prices complemented by enthusiastic, professionally trained personnel.

CORE ACTIVITIES



ALWAYS LEADING IN QUALITY

Since 1994, Tan Thanh is one of the leading companies providing all types of containers and semi trailers . Our company provide customers with a wide range of services: transport/lift, inspection & maintenance, renovation and design.

2020 DRY CONTAINERS & MODIFIED CONTAINERS KEY NUMBERS:

- 3000 dry containers trading (20', 40', 40HC, 45') – C/W standard
- 600 modified containers into facilities (office, toilets, meeting room, mobile shops, motels, home, storage concept, etc.) – International Standard

OUR MARKET SHARE

- The largest dry container trading company
- Currently, 2000 dry containers are on lease
- The biggest modified containers suppliers

OUR SECTORS

- Construction, engineering, infrastructure, logistics, warehousing, freight forwarding, transportation

OUR SUPPLIERS

- Shipping lines and container trading companies



10' DRY CONTAINER



20' DRY CONTAINER



40' DRY CONTAINER



40' HIGH CUBE DRY CONTAINER



45' HIGH CUBE DRY CONTAINER

DIMENSIONS

		10 FEET		20 FEET		40 FEET	
		External	Internal	External	Internal	External	Internal
Length	mm	2 991	2 828	6 058	5 867	12 192	11 998
Width	mm	2 438	2 350	2 438	2 330	2 438	2 330
Height	mm	2 591	2 381	2 591	2 350	2 591	2 350

DOOR OPENING

		10 FEET	20 FEET	40 FEET
Width	mm	2 336	2 336	2 336
Height	mm	2 291	2 291	2 280

RATINGS

		10 FEET	20 FEET	40 FEET
Cubic	m ³	16.3	33	67
Gross weight	kg	10 160	24 000	30 480

DIMENSIONS

		40 FEET HC		45 FEET	
		External	Internal	External	Internal
Length	mm	12 192	11 998	13 716	13 556
Width	mm	2 438	2 330	2 438	2 350
Height	mm	2 896	2 655	2 896	2 698

DOOR OPENING

		40 FEET HC	45 FEET
Width	mm	2 340	2 340
Height	mm	2 585	2 585

RATINGS

		40 FEET HC	45 FEET
Cubic	m ³	75.6	86
Gross weight	kg	30 480	35 350

CONTAINER SERVICES

Container Transport/ Lift
Container Inspection & Maintenance
Container Renovation
Container Design

CRITERIA FOR A HIGH-QUALITY DRY CONTAINER

- Verified quality by CW(Cargo Worthy) & WWST (water, wind, sunlight tight).
- The structure achieves IICL5 standard.
- Had a valid Container Safety Convention (CSC plate safety approval).



Container Inspection & Maintenance Service



Container Transport/ Lift Service



Container Renovation Service



Container Design Service

MODIFIED CONTAINER



10' OFFICE CONTAINER



20' OFFICE CONTAINER



40' OFFICE CONTAINER



40' OFFICE CONTAINER CONNECTED



40' CLASSROOM CONTAINER



SANITARY CONTAINER



CANVAS CONTAINER



OPEN TOP CONTAINER



48' OPENTOP CONTAINER



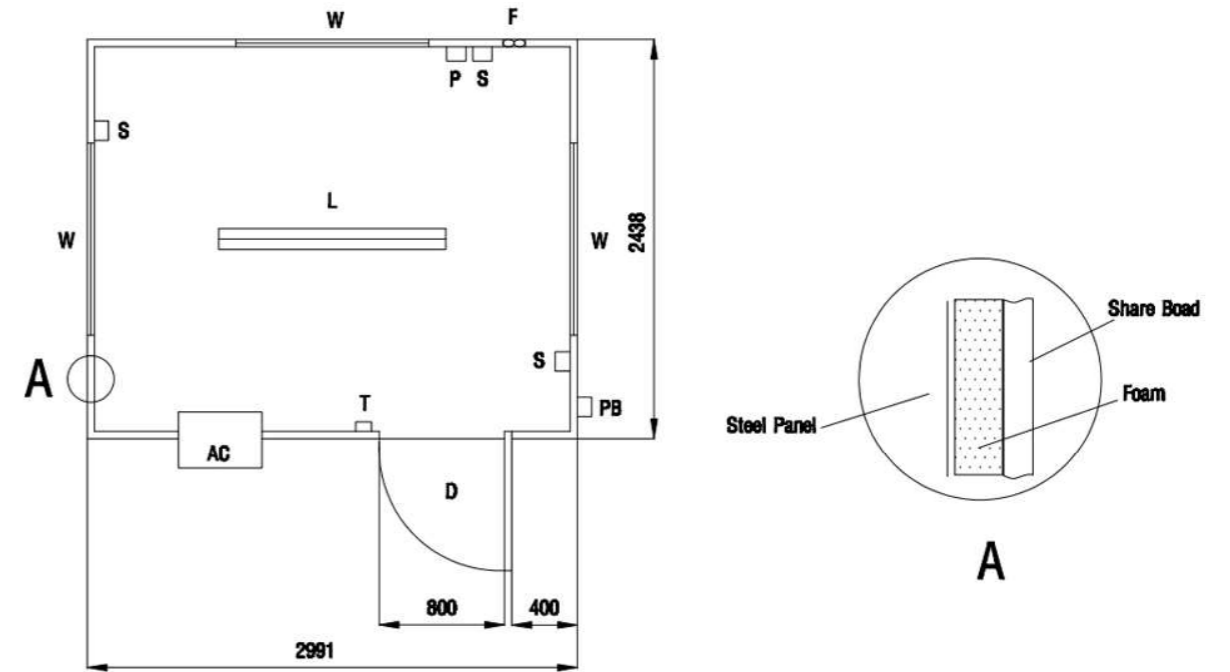
HYDRAULICS FLYING WINGS CONTAINER



CONTAINER USUALLY TRANSPORTING BEVERAGE



OPEN SIDE CONTAINER



10' OFFICE CONTAINER WITHOUT TOILET, WITH AIR CONDITIONER

CONTAINER BOX

Made of steel, second-hand, quality 80%, comply with International Standard available for office and suitable for any environment.

WALL & CEILING

- Made by steel frame (V 3x5cm),
- Insulation for ceiling with FOAM - polyurethane (New 100%, ~3cm thick),
- Insulation for walls with FOAM - polyurethane (New 100%, ~1.5cm thick),
- And covered with fiber cement 3.5m with SHERA brand.

FLOOR

Original container's wood 3 cm thick, finish with vinyl.

DOOR

01 Steel panel door (0,8 x 1,9m) with glass and door knob.

WINDOW

02 Aluminum sliding windows (0,9 x 1,10m), steel protection bar & roof outside.

ELECTRICAL SYSTEM

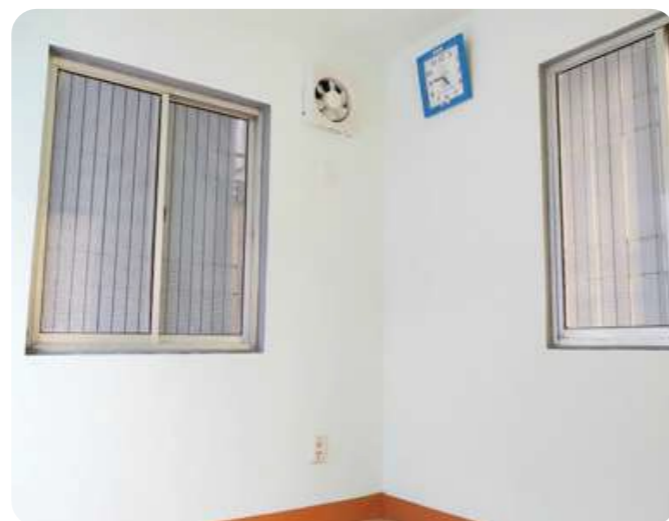
- All Cadivi electric lines hidden behind walls.
- 01 Double power sockets.
- 01 Switch for telephone.
- 01 Circuit breaker of air conditioner 16A.
- 01 Switch for lights 16A.
- 01 Source 32A 1 phase outside.

PAINTING

03 Layers of paint outside used against sea environment & against corrosion.

EQUIPMENT

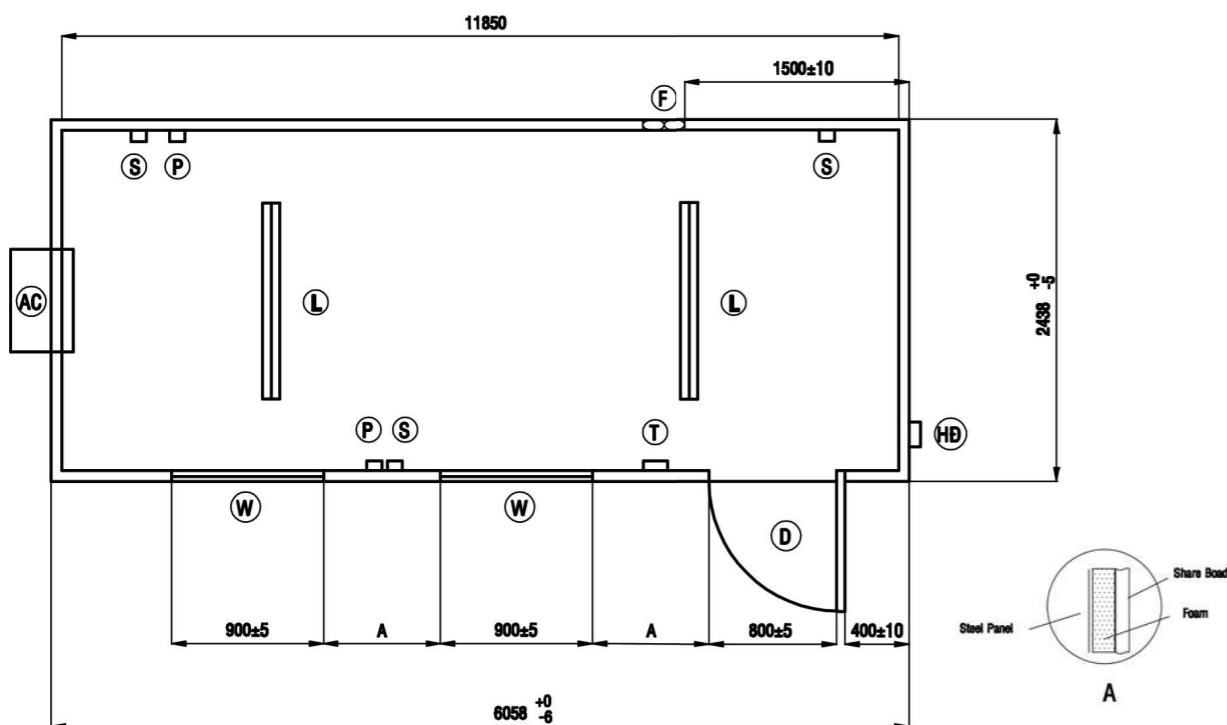
- 01 Air - conditioner with 1,5 HP new 100% brand Reetech.
- 01 Exhaust fan.
- 01 Fluorescence double light (1,2m).
- 01 Cloth hook.
- 01 Clock.



20' OFFICE CONTAINER WITHOUT TOILET



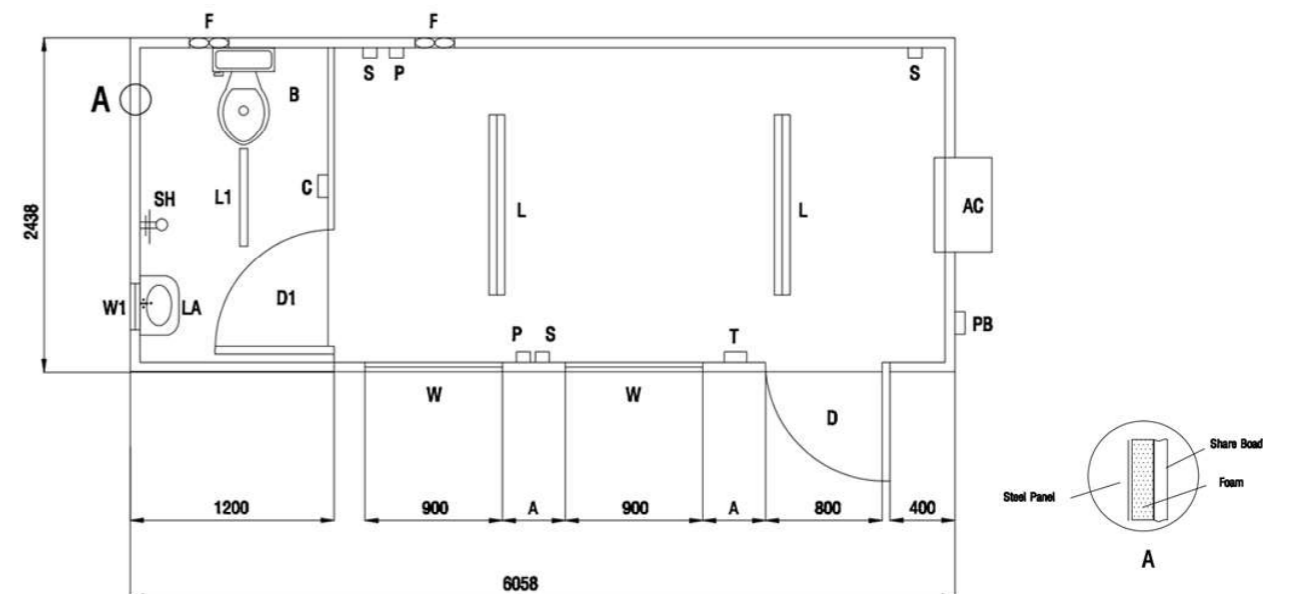
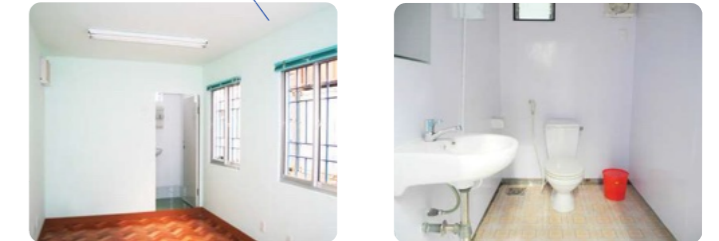
INSIDE



20' OFFICE CONTAINER WITH TOILET



INSIDE





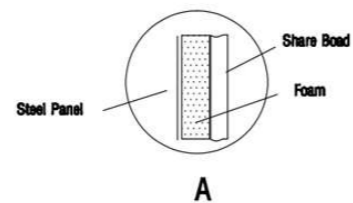
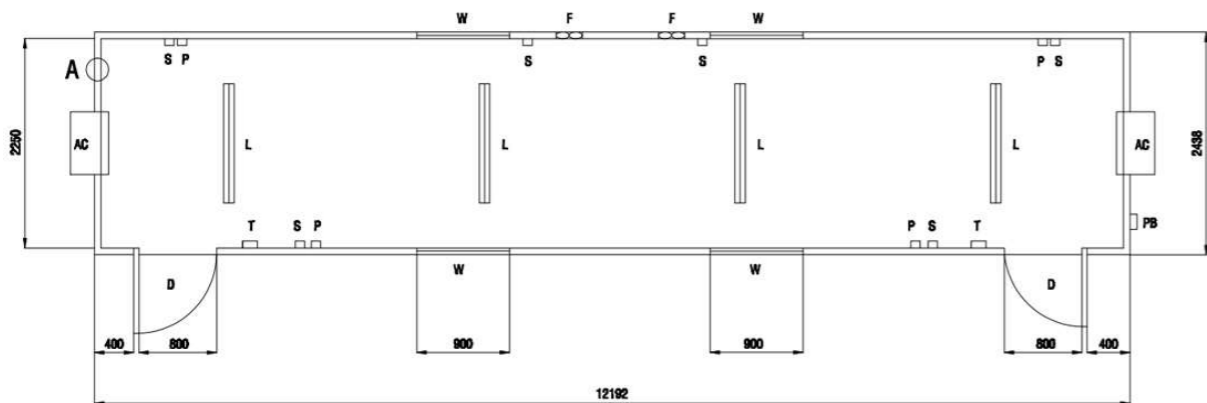
20' OFFICE CONTAINER		WITHOUT TOILET	WITH TOILET
CONTAINER BOX	Made of steel, second-hand, quality 80%, comply with International Standard available for office and suitable for any environment.	✓	✓
WALL & CEILING	<ul style="list-style-type: none"> - Made by steel frame (V 3x5cm), - Insulation for ceiling with FOAM - polyurethane (New 100%, 3cm thick), - Insulation for walls with FOAM - polyurethane (New 100%, 1.5cm thick), - And covered with fiber cement 3.5 mm with SHERA Brand. 	✓	✓
FLOOR	Original container's wood 3 cm thick, finish with vinyl.	✓	✓
DOOR	01 steel panel door (0,8 x 1,9m) with glass and door knob.	✓	✓
WINDOW	02 Aluminum sliding windows (0,9 x 1,10m), steel protection bar & roof outside	✓	✓
ELECTRIC SYSTEM	<ul style="list-style-type: none"> - All Cadivi electric lines hidden behind walls. - 02 Double power sockets. - 02 Switch for telephone. - 01 Circuit breaker of air conditioner 16A. - 02 Switch of lights 16A. - 01 Source 32A 1 phase outside. 	✓	✓
PAINTING	03 Layers of painting outside used against sea environment & against corrosion.	✓	✓
EQUIPMENT	<ul style="list-style-type: none"> - 01 Air - conditioner 1,5 HP new 100% brand Reetech. - 01 Exhaust fan. - 02 Lights fluorescence double (1,2m). - 01 Cloth hook. - 01 Clock. 	✓	✓
TOILET	<ul style="list-style-type: none"> - Dimension: (1.2 m x 2.42m): Floor ceramic tile. - 01 Wooden partition. - 01 Aluminum door. - 01 Single light (0.6m). - 01 Exhausted fan. - 01 Shutter. - 01 Drain cock. - 01 Set lavabo + toilet bowl. - 01 Mirror. - 01 Hanging towel. - 01 Paper case. - 01 Plastic garbage can. - 01 Shower. - 01 water tank 500 litre. - Supply & drainage system with PVC plastic pipes. 	x	✓



40' OFFICE CONTAINER WITHOUT TOILET



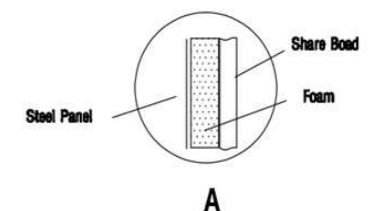
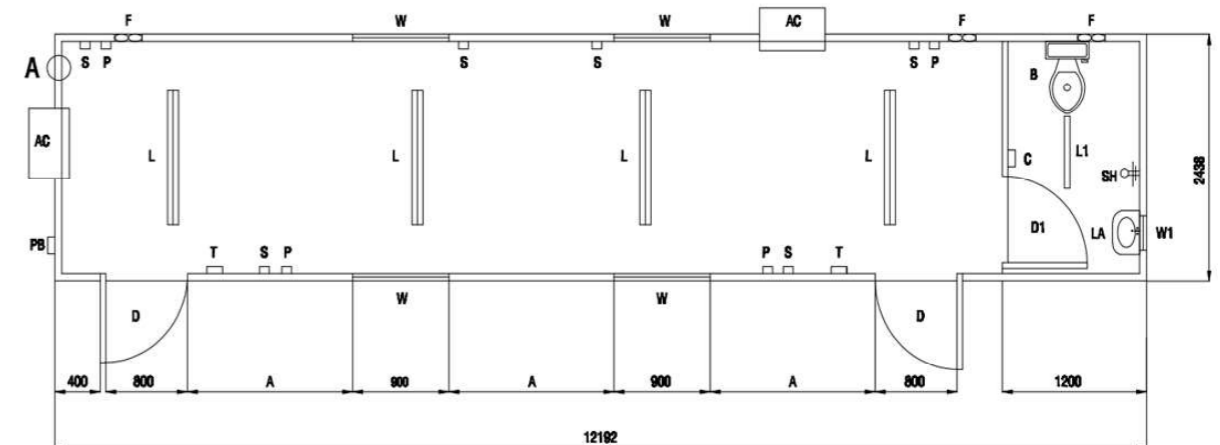
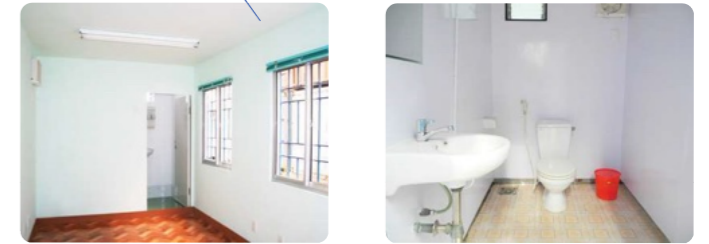
INSIDE



40' OFFICE CONTAINER WITH TOILET



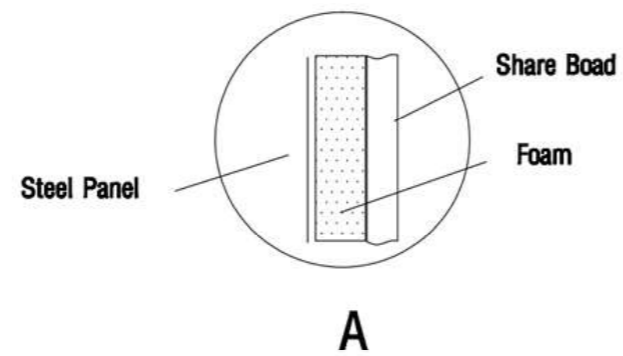
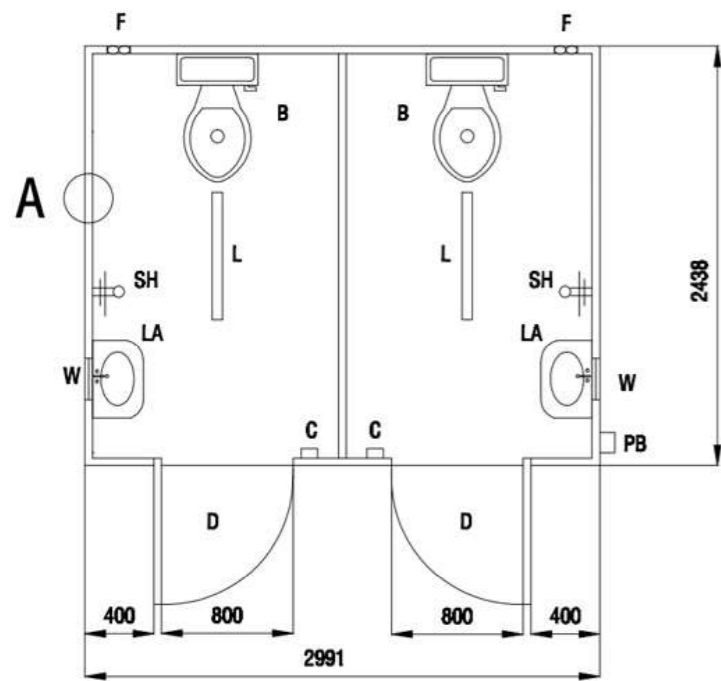
INSIDE



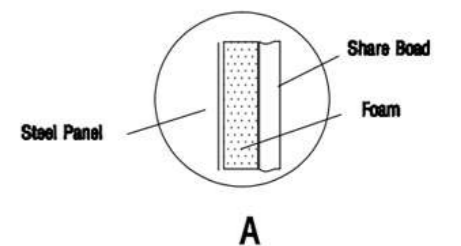
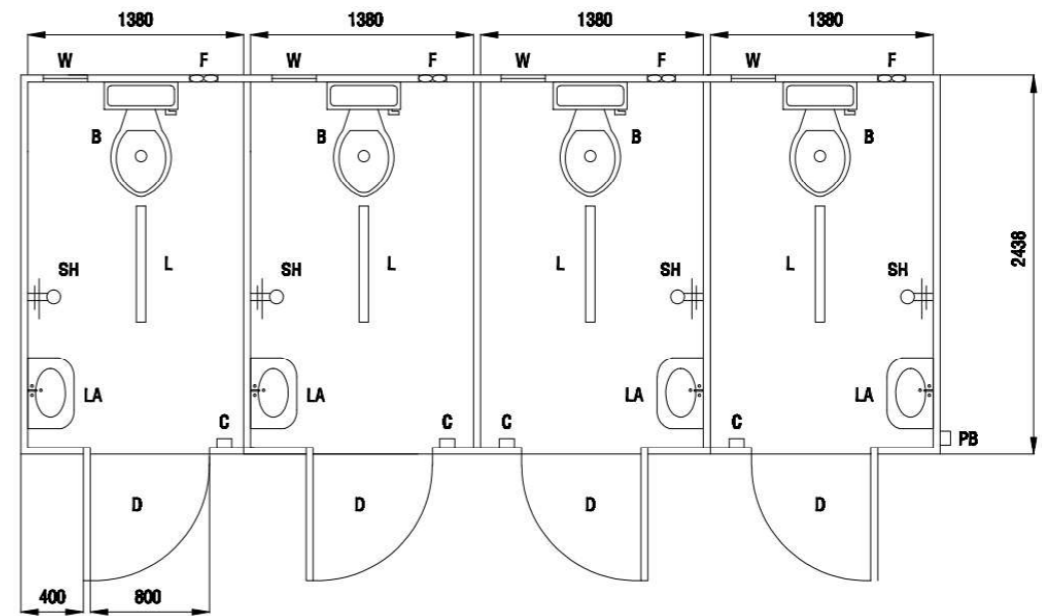
40' OFFICE CONTAINER		WITHOUT TOILET	WITH TOILET
CONTAINER BOX	Made of steel, second-hand, quality 80%, comply with International Standard available for office and suitable for any environment.	✓	✓
WALL & CEILING	<ul style="list-style-type: none"> - Made by steel frame (V 3x5cm), - Insulation for ceiling with FOAM - polyurethane (New 100%, 3cm thick), - Insulation for walls with FOAM - polyurethane (New 100%, 1.5cm thick), - And covered with fiber cement 3.5mm with SHERA Brand . 	✓	✓
FLOOR	Original container's wood 3 cm thick, finish with vinyl.	✓	✓
DOOR	02 Steel panel door (0,8 x 1,9m) with glass and door knob.	✓	✓
WINDOW	04 Aluminum sliding windows (0,9 x 1,10m), steel protection bar & roof outside.	✓	✓
ELECTRIC SYSTEM	<ul style="list-style-type: none"> - All Cadivi electric lines hidden behind walls. - 04 Double power sockets. - 04 Switch for telephone. - 02 Circuit breaker of air conditioner 16A. - 04 Switch of lights 16A. - 01 Source 32A 1 phase outside. 	✓	✓
PAINTING	03 Layers of painting outside used against sea environment & against corrosion.	✓	✓
EQUIPMENT	<ul style="list-style-type: none"> - 02 Air - conditioner with 1,5 HP new 100% brand Reetech. - 02 Exhaust fan. - 04 Lights fluorescence double (1,2m). - 02 Cloth hook. - 01 Clock. 	✓	✓
TOILET	<ul style="list-style-type: none"> - Dimension: (1.2 m x 2.42m): Floor ceramic tile - 01 Wooden partition. - 01 Aluminum door. - 01 Single light (0.6m). - 01 Exhausted fan. - 01 Shutter. - 01 Drain cock. - 01 Set lavabo + toilet bowl. - 01 Mirror. - 01 Hanging towel. - 01 Paper case. - 01 Plastic garbage can. - 01 Shower. - 01 Water tank 500 litre. - Supply & drainage system with PVC plastic pipes. 	x	✓

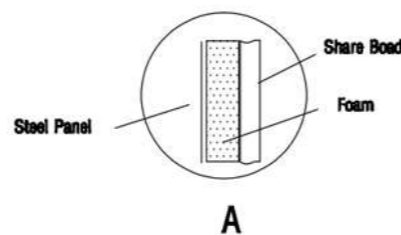
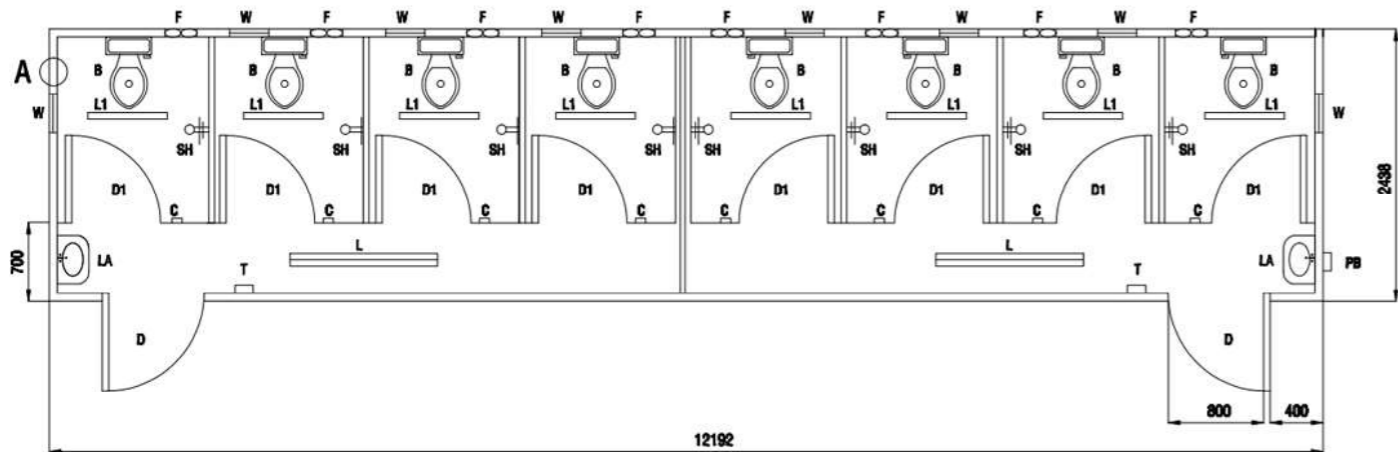


10' SANITARY CONTAINER



20' SANITARY CONTAINER





SANITARY CONTAINER		10'	20'	40'
CONTAINER BOX	Made of steel, second-hand, quality 80%, comply with International Standard available for office and suitable for any environment.	✓	✓	✓
WALL & CEILING	<ul style="list-style-type: none"> - Made by steel frame (V 3x5cm), - Insulation for ceiling with FOAM - polyurethane (New 100%, 3cm thick), - Insulation for walls with FOAM - polyurethane (New 100%, 1.5cm thick), - And covered with fiber cement 3.5m with SHERA brand. 	✓	✓	✓
FLOOR	Original container's wood 3 cm thick, finish with ceramic tiles.	✓	✓	✓
DOOR	Steel panel door (0,8 x 1,9m) with glass and door knob.	02	04	02
PAINING	03 layers of painting outside used against sea environment & against corrosion.	✓	✓	✓
TOILET	- 01 lavabo	✗	✗	✓
	Container divided into small rooms with 1 water tank 500 litre, each room including: <ul style="list-style-type: none"> - Floor ceramic tile. - 01 Wooden & fiber cement partition with SHERA brand. - 01 Aluminum door. - 01 Single light (0.6m). - 01 Exhaust fan. - 01 Shutter. - 01 Drain. - 01 Set sink + 01 toilet bowl. - 01 Mirror. - 01 Hanger towel. - 01 Tissue holder. - 01 Plastic trash bin. - 01 Shower. - 01 Water tank 500 litre. - Water supply & drainage system with PVC plastic pipes. 	02	04	08
		✓	✓	✓

TYPICAL PROJECTS



Villas in Can Gio District, Ho Chi Minh City.

TYPICAL PROJECTS



T&N hotel project in Quang Ninh

TYPICAL PROJECTS



My Storage Company with partners from Germany and The United States. Cooperate with us to create a warehouse of goods locate on An Phu Ward, Thu Duc City, Ho Chi Minh City.

TYPICAL PROJECTS



Homestay Container in Da Lat.



Library container in Dong Thap Province





THANK YOU FOR YOUR BUSINESS

BUILDING A SUSTAINABLE RELATIONSHIP WITH
OUR CUSTOMERS IS OUR COMPANY'S BUSINESS
PHILOSOPHY

